



### One Jericho Plaza Jericho, NY

### High-End Installation – Aggressive Pricing

**Building Size:** 298,000 square feet  
**Available Space:** 10,680 square feet on the first floor  
**Possession:** Immediate  
**Lease Price:** Upon request  
**Electric:** \$3.00 per square foot  
**Parking:** 5 cars per 1,000 square feet  
**Term:** Sublease through September 30, 2012

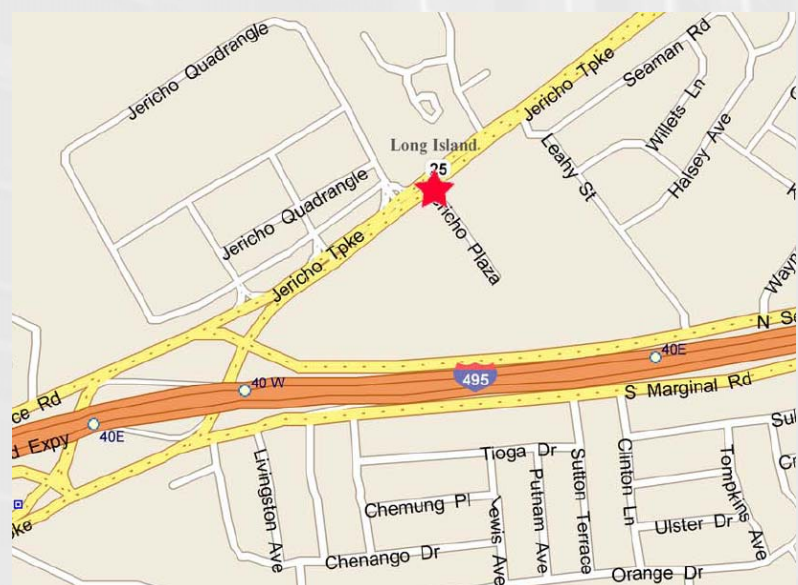
**Comments:**

- Furniture can be made available
- Easily accessible from the Long Island Expressway immediately off Exit 40 east
- Banking, concierge, fitness center, café on-site
- Storage space available
- On-site management
- Prestigious tenant roster

**For More Information  
Contact Exclusive Agents:**

**Frank X. Pagano, Jr.**  
Senior Director  
[fxpjr@cnrinc.com](mailto:fxpjr@cnrinc.com)  
516-364-2900 Ext. 2380

**Daniel J. Wiener**  
Managing Director  
[dwiener@cnrinc.com](mailto:dwiener@cnrinc.com)  
516-364-2900 Ext. 2330

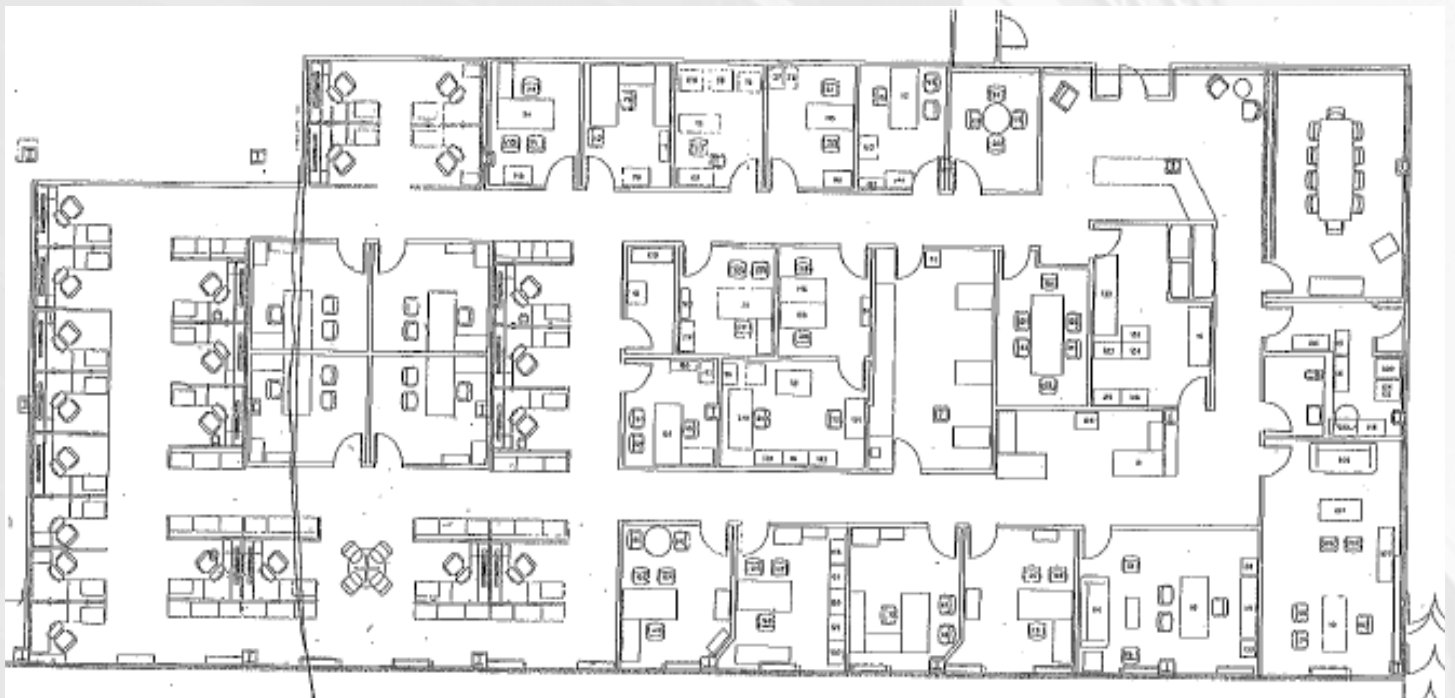




CORPORATE NATIONAL REALTY

100 Crossways Park Drive West, Suite 111  
Woodbury, NY 11797  
www.cnrinc.com

## One Jericho Plaza • Jericho • NY Floor Plan



For More Information Contact Exclusive Agents:

Frank X. Pagano, Jr.

Senior Director

[fxpjr@cnrinc.com](mailto:fxpjr@cnrinc.com)

516-364-2900 Ext. 2380

Daniel J. Wiener

Managing Director

[dwiener@cnrinc.com](mailto:dwiener@cnrinc.com)

516-364-2900 Ext. 2330

All information furnished is from sources deemed reliable. No representation or warranty is made as to the accuracy thereof and is submitted subject to errors, omissions, change of price, prior sales or lease, or withdrawal without notice, and any negligence on the part of the writer.