



1800 Walt Whitman Road Melville, NY

Long Term Sublease Opportunity – Great Deal!

Building Size:	50,000 square feet
Available Space:	Up to 3,990 square feet (divisible to suit)
Possession:	Immediate
Lease Price:	Upon request
Electric:	\$3.00 per square foot
Parking:	4 cars per 1,000 square feet
Term:	Sublease through April 30, 2019 (shorter term considered)

- Comments:**
- 2,073 – 3,100 square feet plus a large mail / IT room is available
 - Easily accessible from the Long Island Expressway
 - Well located suite immediately off lobby entrance
 - Reserved parking available
 - Parallel to the Route 110 corridor
 - Restaurants and hotels located nearby

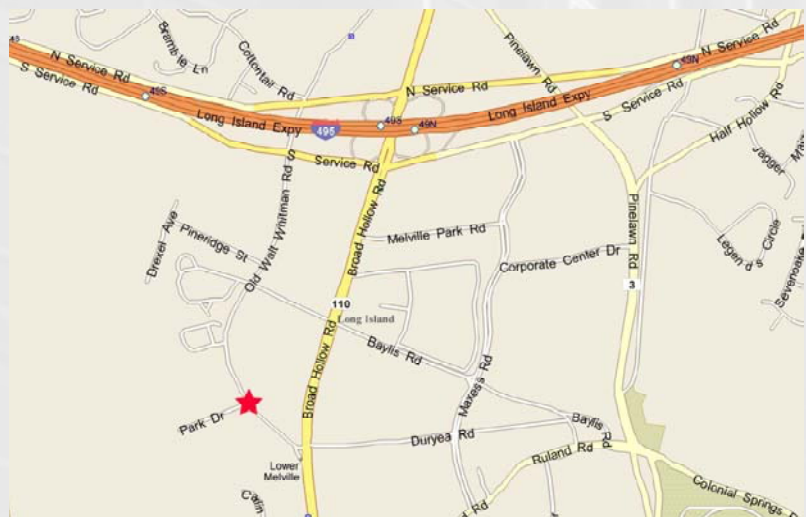
**For More Information
Contact Exclusive Agent:**

Neal Marchesano

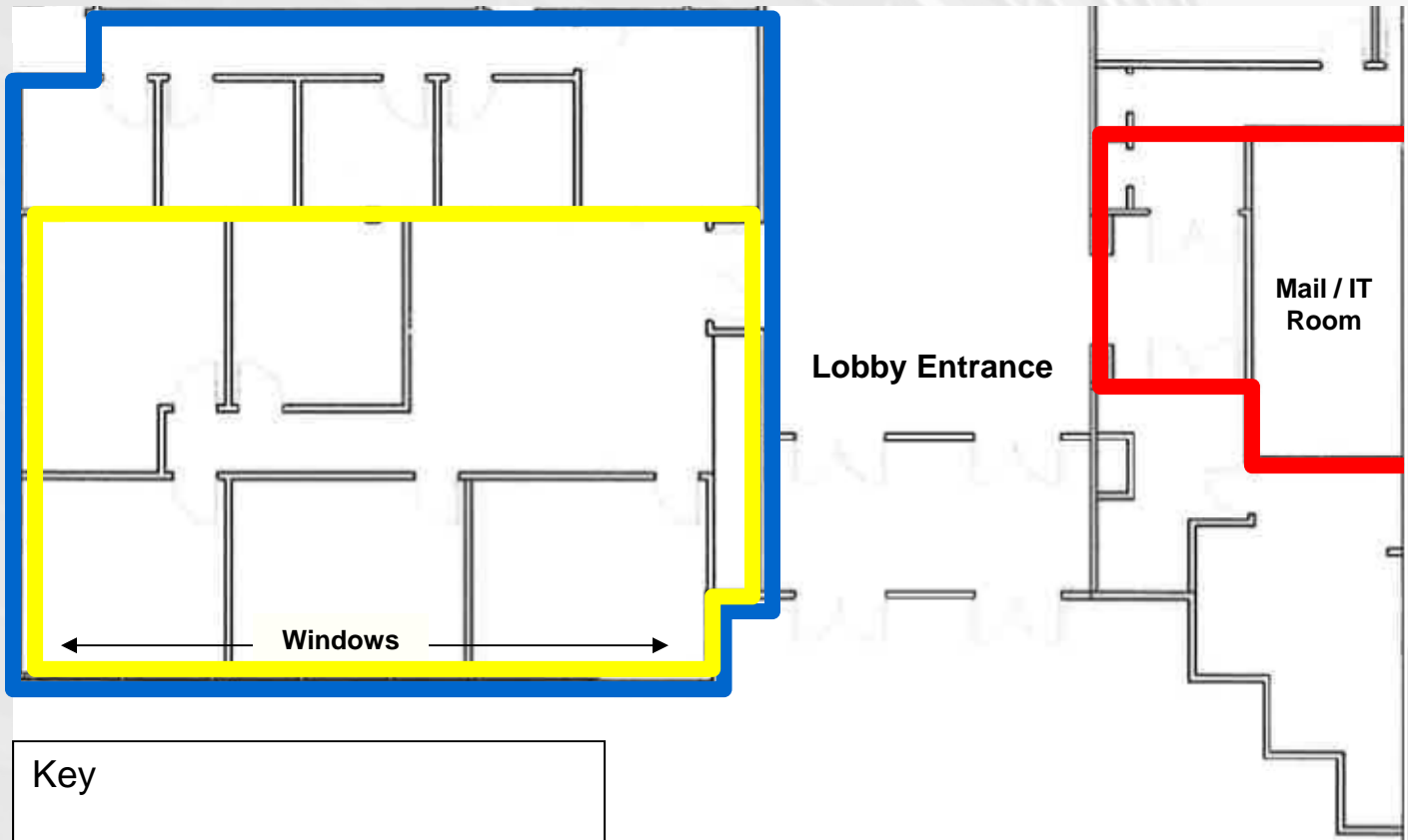
Senior Director

nmarchesano@cnrinc.com



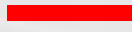
516-364-2900 Ext. 2300



1800 Walt Whitman Road • Melville • NY Floor Plan



Key

	3,100 SF (Approximately)
	2,073 SF
	890 SF

For More Information Contact Exclusive Agent:

Neal Marchesano

Senior Director

nmarchesano@cnrinc.com

516-364-2900 Ext. 2300