



147 South Wellwood Avenue
Lindenhurst, NY

New Lower Lease Price!

For Sale or Lease

Building Size: 9,197 square feet
Ground Floor – 4,397 square feet
2nd floor rear – 1,363 square feet
2nd floor front – 917 square feet
Lower level – 2,520 square feet

Plot Size: .11 acres

Sale Price: \$1,175,000

Lease Price: \$85,000 NNN per year

Taxes: \$23,500

Comments:

- Former bank branch includes teller stations and vaults
- Located in the heart of the Lindenhurst town center
- 1 block walk to the Long Island Railroad
- Classic architecture
- Creative high-ceiling space ideal for a variety of office or retail uses

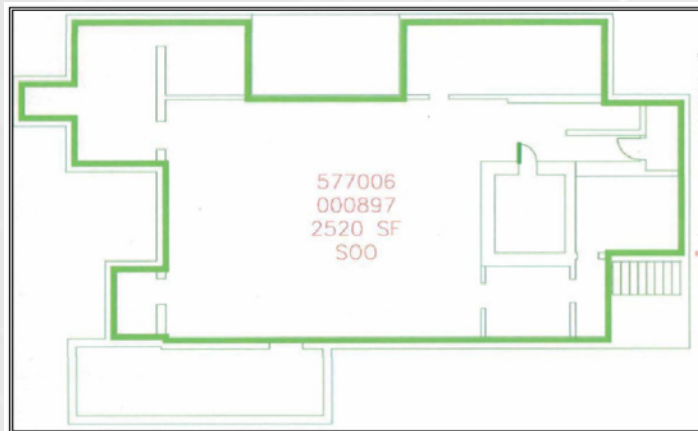
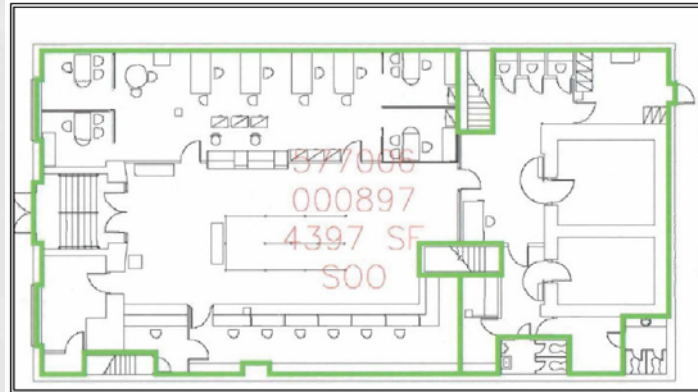
For More Information
Contact Exclusive Agents:

Frank X. Pagano, Jr.
Senior Director
fxpjr@cnrinc.com
516-364-2900 Ext. 2380

Daniel J. Wiener
Managing Director
dwiener@cnrinc.com
516-364-2900 Ext. 2330



147 South Wellwood Avenue • Lindenhurst • NY Floor Plans



For More Information Contact Exclusive Agents:

Frank X. Pagano, Jr.

Senior Director

fxpj@cnrinc.com

516-364-2900 Ext. 2380

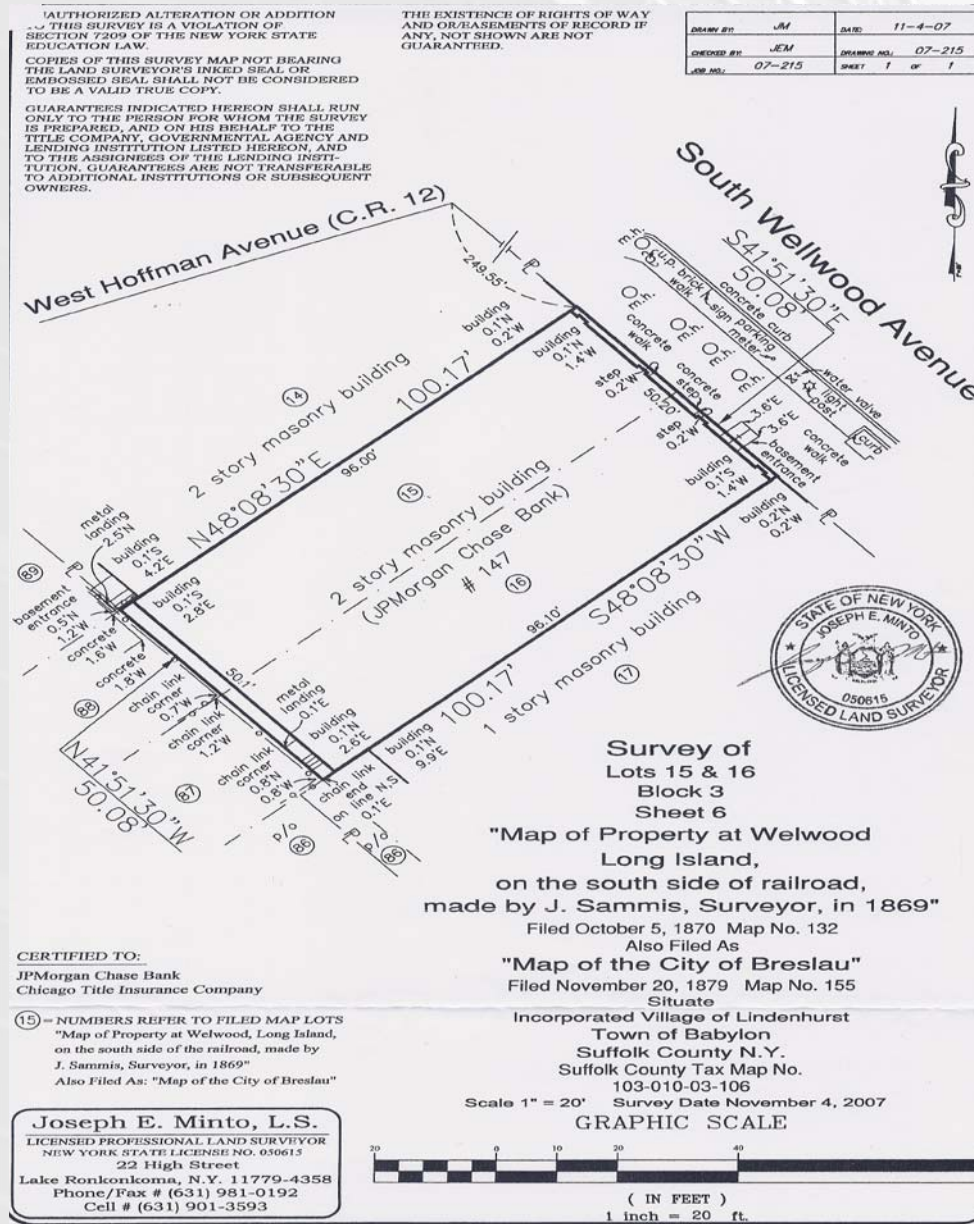
Daniel J. Wiener

Managing Director

dwiener@cnrinc.com

516-364-2900 Ext. 2330

147 South Wellwood Avenue • Lindenhurst • NY Survey



For More Information Contact Exclusive Agents:

Frank X. Pagano, Jr.
Senior Director

fxpjr@cnrinc.com

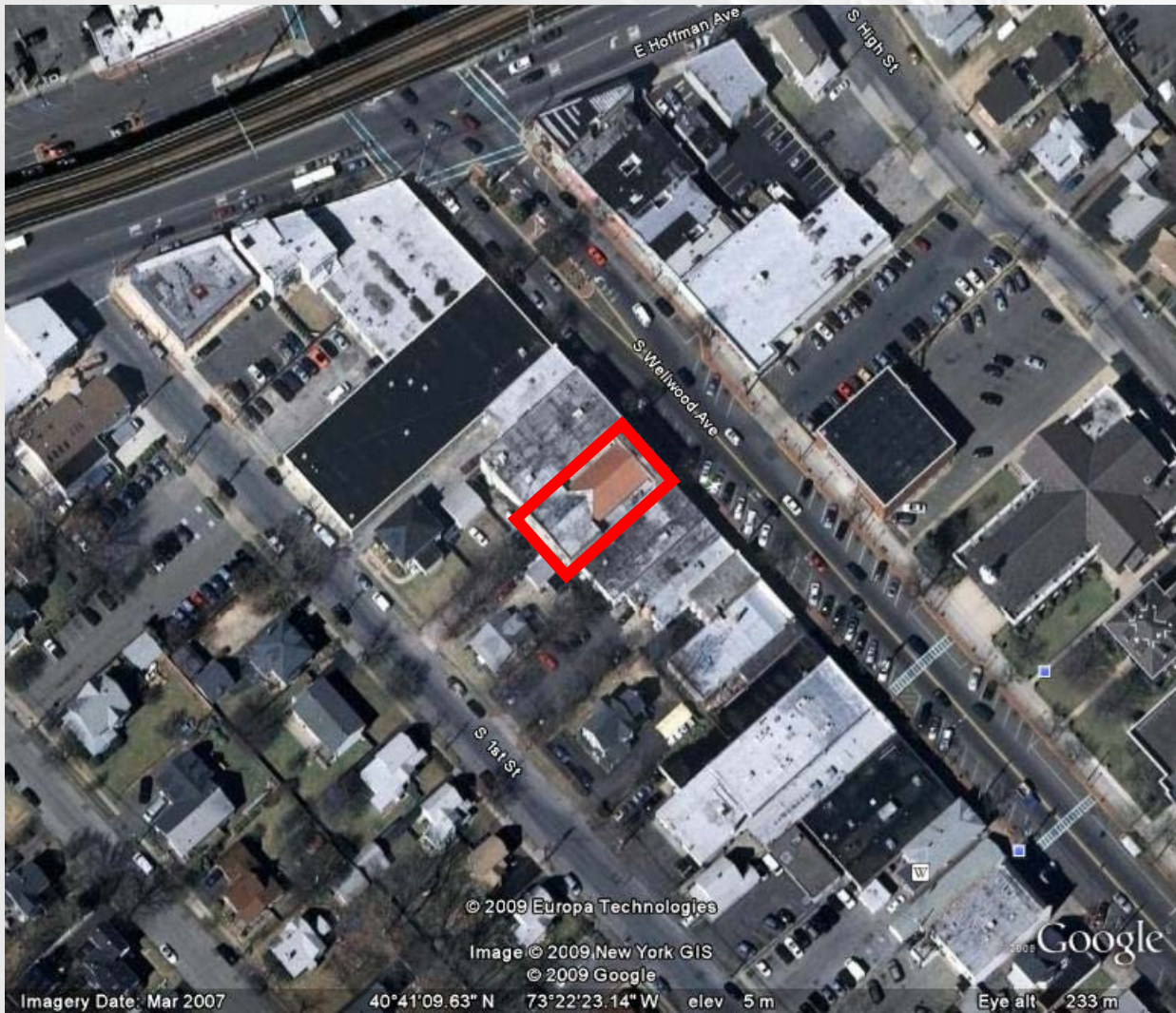
516-364-2900 Ext. 2380

Daniel J. Wiener
Managing Director

dwiener@cnrinc.com

516-364-2900 Ext. 2330

147 South Wellwood Avenue • Lindenhurst • NY Aerial Photo



For More Information Contact Exclusive Agents:

Frank X. Pagano, Jr.

Senior Director

fxpjr@cnrinc.com

516-364-2900 Ext. 2380

Daniel J. Wiener

Managing Director

dwiener@cnrinc.com

516-364-2900 Ext. 2330